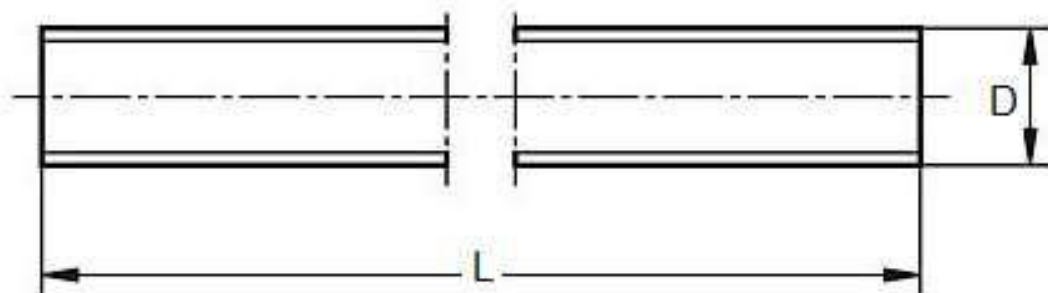




Product Dimensions, Standards and Weights

DIN 976 (preplaces DIN 975) Technical Specifications

Metric DIN 976 Fully Threaded Stud Bolts



Dimensions of Metric DIN 976 Studs

d	Pitch	L (mm)	Weight kg/1000pcs
M2	0.4	1000	18.7
M2,5	0.45	1000	30
M3	0.5	1000	44
M3,5	0.6	1000	60
M4	0.7	1000	78
M5	0.8	1000	124
M6	1	1000	177
M8	1 / 1.25	1000	319
M10	1 / 1.25 / 1.75	1000	500
M12	1.5 / 2	1000	725
M14	1.5 / 2	1000	970
M16	1.5 / 2	1000	1330
M18	1.5 / 2.5	1000	1650
M20	1.5 / 2.5	1000	2080
M22	1.5 / 2.5	1000	2540
M24	2.0 / 3	1000	3000

Cont...



UNIQUE FASTENERS

Precision Fasteners, Built to Last
175/6 Sar Building, Sp Road, Bangalore, 560002



+91-8660813791



uniquefasteners.in



INFO@UNIQUEFASTENERS.IN



d	P	L (mm)	Weight kg/1000pcs
M27	2.0 / 3	1000	3850
M30	2 / 3,5	1000	4750
M33	2 / 3,5	1000	5900
M36	3.0 / 4	1000	6900
M39	3.0 / 4	1000	8200
M42	3 / 4,5	1000	9400
M45	3 / 4,5	1000	11000
M48	3.0 / 5	1000	12400
M52	3.0 / 5	1000	14700

Metric DIN 976 Fully Threaded Stud Bolts are headless bolts threaded all the way from one end to the other (full / all thread). They are designed for a nut to be applied on both ends and are often used for electrical, construction and plumbing for hanging purposes. Unique Fasteners offers one of the most complete ranges of metric studs and other inch and metric industrial fasteners for immediate delivery from stock. The following sizes of metric DIN 976 Fully Threaded Stud Bolts are available for immediate shipping from stock: Diameters ranging from M2 to M52 and lengths to 1000mm in A2 and marine grade A4 stainless steel.

DIN (**D**eutsches **I**nstitut für **N**ormung - German Institute for Standardization) standards are issued for a variety of components including industrial fasteners as Metric DIN 939 double end studs. The DIN standards remain common in Germany, Europe and globally even though the transition to ISO standards is taking place. DIN standards continue to be used for parts which do not have ISO equivalents or for which there is no need for standardization.