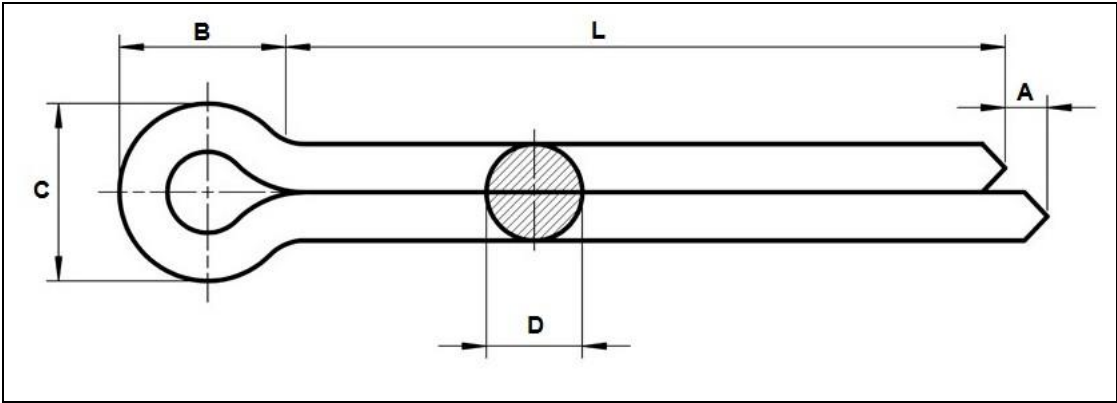




Product Dimensions and Weights

DIN 94 /ISO 1234 Specifications

Metric DIN 94 SPLIT PINS (COTTER)



Nominal Diameter	1	1.5	2	2.5	3.2	4	5	6.3	8	10	13
D Min Max	0.9	1.4	1.8	2.3	2.9	3.7	4.6	5.9	7.5	9.5	12.4
	0.8	1.3	1.7	2.1	2.7	3.5	4.4	5.7	7.3	9.3	12.1
A	1.6	2.5	2.5	2.5	3.2	4	4	4	4	6.3	6.3
B	3	3.2	4	5	6.4	8	10	12.6	16	20	26
C	1.6	2.4	3.2	4	5.1	6.5	8	10.3	13.1	16.6	1.7

All measurements are in mm



UNIQUE FASTENERS

Precision Fasteners, Built to Last
175/6 Sar Building, Sp Road, Bangalore, 560002



+91-8660813791



uniquefasteners.in



INFO@UNIQUEFASTENERS.IN



Nominal Diameter	1	1.5	2	2.5	3.2	4	5	6.3	8	10	13
L (mm)	Weight kg(s) / 1000 pcs										
10	0.04	0.15	0.37								
12	0.08	0.16	0.38	0.59	1.01	1.89					
16	0.10	0.22	0.39	0.70	0.09	2.22					
18		0.22	0.40	0.73	1.20	2.36					
20	0.13	0.25	0.45	0.76	1.27	2.36					
22		0.26	0.47		1.40	2.51					
25		0.31	0.54	0.99	1.49	2.84					
28		0.37	0.58	1.01	1.71	2.94	4.84				
32		0.38	0.65	1.18	1.85	3.12	5.36	6.97			
36			0.80	1.28	2.05	3.72	5.92	10.20			
40			0.82	1.38	2.24	4.07	6.41	11.40	20.60		
45				1.57	2.37	4.33	6.82	12.60	21.20		
50				2.00	2.81	4.75	7.87	13.20	23.10		
56					3.10	5.40	8.52	14.60	25.00	40.30	
63					3.50	5.87	9.41	15.70	28.00	44.80	
71						7.09	10.00	17.60	30.40	49.20	
80						7.94	11.50	18.50	33.40	53.30	
90						8.79	12.80	20.80	36.70	58.50	106.90
100							15.70	22.90	41.20	64.10	117.80
112								25.20	47.00	72.00	128.00
125								27.30	48.50	79.00	142.90
140									65.60	97.70	170.00



Metric DIN 94 Split Pins (Cotter Pins) are common used fasteners that hold assemblies together. Made of soft metal wire looped on itself so the two resulting tines can be inserted into a pre-drilled hole and bent to keep it in place. **Cotter pins are typically made of soft metal allowing for easy installation and removal. However, this also makes them poor locking devices when strong shear forces are expected.** UNIQUE Fasteners offers over 500,000 unique fastener products from stock in inch and metric standard in a variety of materials and finishes. The following sizes DIN 93 Single Tab Safety Lock Washers are available for immediate shipping from stock: Diameters ranging from M1 to M13 up to 140mm long in steel as well as stainless steel A2 and A4.

DIN (**D**eutsches **I**nstitut für **N**ormung - German Institute for Standardization) standards are issued for a variety of components including industrial fasteners as Metric DIN 85 Slotted Pan Head Machine Screws. The DIN standards remain common in Germany, Europe and globally even though the transition to ISO standards is taking place. DIN standards continue to be used for parts which do not have ISO equivalents or for which there is no need for standardization. The ISO equivalent of DIN 94 Split Pins (Cotter Pins) is ISO 1234.