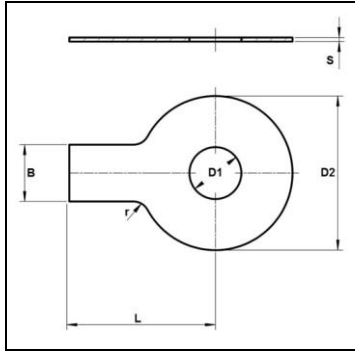




Product Dimensions and Weights

DIN 93 Specifications

Metric DIN 93 Single One Tab Safety Lock Washers



Nominal Diameter	D1	D2	S	B	L	WEIGHT (kg/1000pcs)
5	5.3	17	0.5	6	16	1.05
6	6.4	19	0.5	7	18	1.21
8	8.4	22	0.75	8	20	2.32
10	10.5	26	0.75	10	22	3.13
12	13	30	1	12	28	6
14	15	33	1	12	28	7
16	17	36	1	15	32	8.5
18	19	40	1	18	36	11
20	21	42	1	18	36	11
22	23	50	1	20	42	14.8
30	31	63	1.6	26	52	36.3
36	37	75	1.6	30	60	51.3
39	40	82	1.6	32	64	59.7
42	43	88	1.6	35	70	69.5
45	46	95	1.6	38	75	81.2
48	50	100	1.6	40	80	89
52	54	105	1.6	44	85	98

All measurements are in mm



UNIQUE FASTENERS

Precision Fasteners, Built to Last

175/6 Sar Building, Sp Road, Bangalore, 560002



+91-8660813791



uniquefasteners.in



INFO@UNIQUEFASTENERS.IN



Metric DIN 93 Single Tab Safety Lock Washers are used as locking devices designed to prevent the washer from rotating relative to the bolt or shaft. Din 93 Tab Washers have a single external tab protruding from the washer and when positioned correctly it is this tab that prevents rotation of the washer. UNIQUE Fasteners offers over 500,000 unique fastener products from stock in inch and metric standard in a variety of materials and finishes. The following sizes DIN 93 Single Tab Safety Lock Washers are available for immediate shipping from stock: Diameters ranging from M1 to M39 in steel as well as stainless steel A2 and A4.

DIN (**D**eutsches **I**nstitut für **N**ormung - German Institute for Standardization) standards are issued for a variety of components including industrial fasteners as Metric DIN 93 Single Tab Safety Lock Washers. The DIN standards remain common in Germany, Europe and globally even though the transition to ISO standards is taking place. DIN standards continue to be used for parts which do not have ISO equivalents or for which there is no need for standardization as in the case of DIN 93 Single Tab Safety Lock Washers.