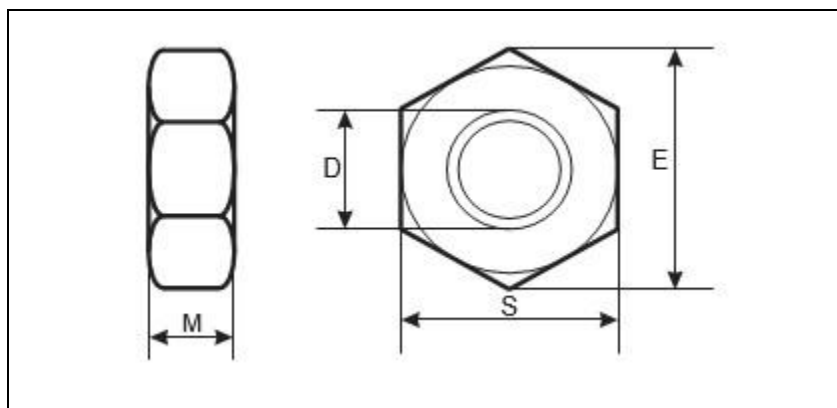




## Product Dimensions and Weights

## DIN 936 / ISO 4035 Technical Specifications

### Metric DIN 936 Low Profile Thin Hex Nut



D	S	E	M	WEIGHT IN KG(s) PER 1000 PCS
M8	13	14.38	5	4.0
M10	17	18.90	6	8.6
M12	19	21.10	7	12.1
M14	22	24.49	8	18.2
M16	24	26.75	8	20.1
M18	27	29.56	9	29.6
M20	30	33.53	9	36.3
M24	36	39.98	10	58
M27	40	45.20	12	90
M30	46	51.28	12	111
M33	50	55.37	14	155
M36	55	61.31	14	190
M39	60	66.44	16	260
M42	65	72.61	16	307
M48	75	83.91	18	460

All measurements are in mm



# UNIQUE FASTENERS

Precision Fasteners, Built to Last  
175/6 Sar Building, Sp Road, Bangalore, 560002



+91-8660813791



[uniquefasteners.in](http://uniquefasteners.in)



[INFO@UNIQUEFASTENERS.IN](mailto:INFO@UNIQUEFASTENERS.IN)



Metric DIN 936 Low Profile Hex Nuts are similar to a hex jam nut (DIN 439) but with slightly different heights. They are thin hex nuts about half as thick as a regular hex nut. They are often used as lock nuts, where they are threaded up against a standard nut locking it in place or in any circumstance where a standard nut is too thick for an application, a hex jam nut can be a very useful alternative. Unique Fasteners offers the following sizes for immediate delivery from stock: M8 to M42 in both A2 and marine grade stainless steel as well as brass and steel zinc in right hand and left had threads. Unique Fasteners offers over 500,000 unique fastener products from stock in inch and metric standard in a variety of materials and finishes. The following sizes of metric DIN 936 Low Profile Hex Nuts are available for immediate shipping from stock: Diameters ranging from M2 to M60 in steel and A2 and marine grade A4 stainless steel.

DIN (**D**eutsches Institut für **N**ormung - German Institute for Standardization) standards are issued for a variety of components including industrial fasteners as metric DIN 936 Low Profile Hex Nuts. The DIN standards remain common in Germany. Europe and globally even though the transition to ISO standards is taking place. DIN standards continue to be used for parts which do not have ISO equivalents or for which there is no need for standardization. In this case the ISO equivalent for DIN 936 is ISO 4035.