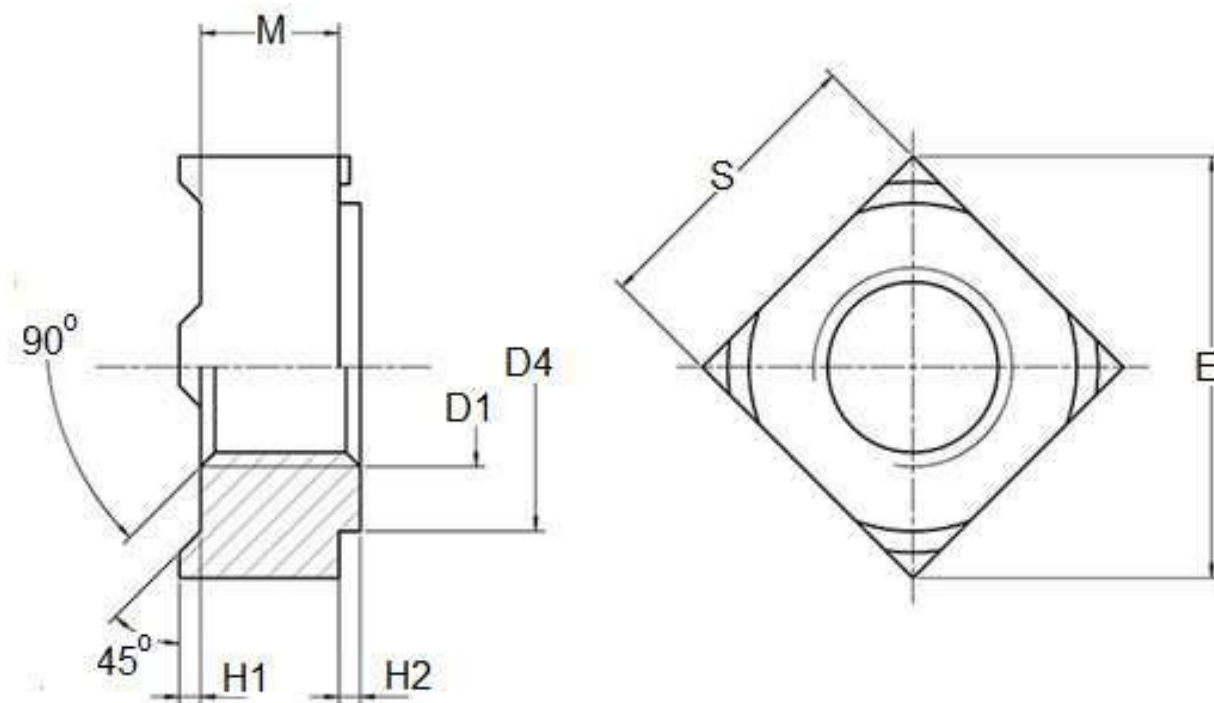




Product Dimensions, Standards and Weights

DIN 928 Technical Specifications

Metric DIN 928 Square Weld Nuts



Dimensions of DIN 928 square weld nuts

D1	M4	M5	M6	M8	M10	M12	M14	M16
E	9	12	13	18	22	25	28	32
S	7	9	10	14	17	19	22	24
M	3.5	4.2	5	6.5	8	9.5	11.4	13
D4	6.4	8.2	9.1	12.8	15.6	17.4	20.4	22.4
H1	0.6	0.8	0.8	1	1.2	1.4	1.4	1.6
H2	0.4	0.6	0.7	1.1	1.25	1.75	1.75	2
Weight kg/1000pcs	.81	1.7	2.4	6.5	11.3	16.6	26.7	35.8



UNIQUE FASTENERS

Precision Fasteners, Built to Last
175/6 Sar Building, Sp Road, Bangalore, 560002



+91-8660813791



uniquefasteners.in



INFO@UNIQUEFASTENERS.IN



Metric DIN 928 square weld nuts have four equally spaced welding projections at each corner for solid contact with the weld surface. The projections help to accommodate weld surfaces that may not be perfectly flat. It also features a precision pilot for accurate location and threading of mated components and protecting the threads from welding spatter.

Unique Fasteners offers one of the most complete ranges of metric nuts and other inch and metric industrial fasteners for immediate delivery from stock. The following sizes of DIN 928 hexagon weld nut are available for immediate shipping from stock: Diameters ranging from M4 to M12 in steel.

DIN (**D**eutsches **I**nstitut für **N**ormung - German Institute for Standardization) standards are issued for a variety of components including industrial fasteners as Metric DIN 929 hexagon weld nuts. The DIN standards remain common in Germany, Europe and globally even though the transition to ISO standards is taking place. DIN standards continue to be used for parts which do not have ISO equivalents or for which there is no need for standardization.