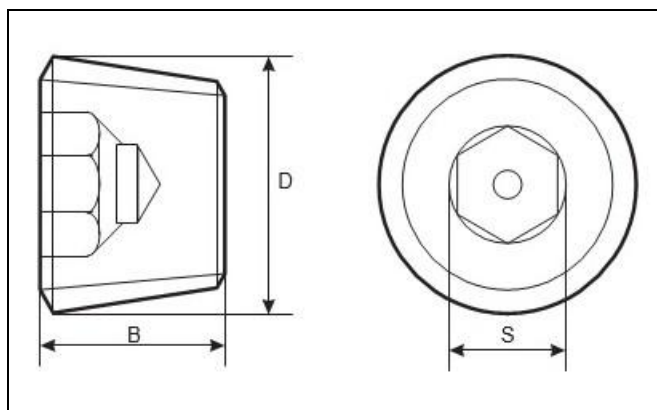




Product Dimensions and Weights

DIN 906 Technical Specifications

Metric DIN 906 Tapered Hexagon Socket Screw Plug



D (NOMINAL)	B	S	Weight kg/1000pcs
M8-1.00	8	4	2.07
M10-1.00	8	5	3.38
M12-1.50	10	6	6.1
M14-1.50	10	7	8.1
M16-1.50	10	8	11
M18-1.50	10	10	14.6
M20-1.50	10	10	17.6
M22-1.50	10	22	22.9
M24-1.50	12	12	30.8
M26-1.50	12	17	38.6
M30-1.50	12	17	44
M36-1.50	16	19	85.2
M42-1.50	18	22	135
M45-1.50	18	22	167
M48-1.50	20	24	214

All measurements are in mm



UNIQUE FASTENERS

Precision Fasteners, Built to Last

175/6 Sar Building, Sp Road, Bangalore, 560002



+91-8660813791



uniquefasteners.in



INFO@UNIQUEFASTENERS.IN



Metric DIN 906 are tapered hexagon socket screw plugs are threaded plugs with a hexagon socket drive (allen drive) at one end and a slightly tapered pipe thread along the full length of the plug. They are typically used to seal cylindrically threaded holes in pipes and fittings carrying air, gases or fluids under pressure. The threaded section of the plug is slightly conical and when tightened to the appropriate torque the deformation of the threads creates the seal. Often additional sealing coating such as thread seal tape ("teflon tape"), a liquid pipe sealant applied to the threads, or pre-applied sealant is necessary for a perfect seal. Metric DIN 906 tapered hexagon socket screw plugs are available in brass, steel as well as stainless steel A2 and A4. Unique Fasteners offers over 500.000 unique fastener products from stock in inch and metric standard in a variety of materials and finishes. The following sizes of metric DIN 906 tapered hexagon socket screw plugs are available for immediate shipping from stock: Diameters ranging from M8 to M48 in brass, steel and stainless steel A2 and A4.

DIN (**D**eutsches **I**nstitut für **N**ormung - German Institute for Standardization) standards are issued for a variety of components including industrial fasteners as metric DIN 906 tapered hexagon socket screw plugs. The DIN standards remain common in Germany, Europe and globally even though the transition to ISO standards is taking place. DIN standards continue to be used for parts which do not have ISO equivalents or for which there is no need for standardization like DIN 906 tapered hexagon socket screw plugs.