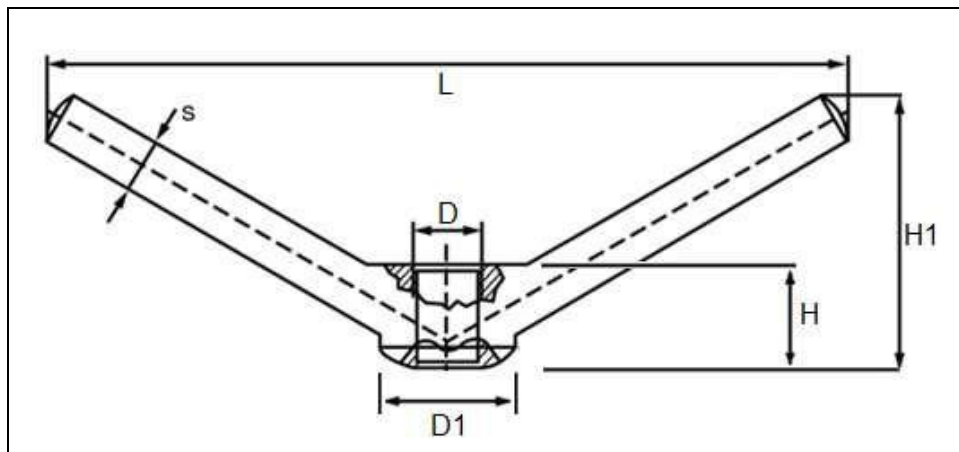




Product Dimensions and Weights

DIN 80701 Specifications

Metric DIN 80701 Wing Nut / Toggle Nuts



Dimensions and Weight of Metric DIN 80701 Wing Nut / Toggle Nuts

| D (mm) | D1 | L | H | H1 | S | Weight Kg/1000pcs |
|--------|----|-----|----|----|----|----------------------|
| M16 | 40 | 240 | 25 | 75 | 16 | 570 |
| M20 | 40 | 240 | 25 | 75 | 16 | 560 |
| M24 | 40 | 240 | 25 | 75 | 16 | 550 |

All measurements are in mm

Metric DIN 80701 Wing Nut / Toggle Nuts are solid round based nut with two cylindrical wings on either side that allow tightening and loosening by use of thumb and forefinger rather than having to use a wrench or other tool thus ensuring easy rapid assembly and disassembly using only fingers. DIN 80701 Wing Nut / Toggle Nuts can be used for many applications where quick hand tensioning and clamping is required. Unique Fasteners offers over 500,000 unique fastener products from stock in inch and metric standard in a variety of materials and finishes. The following sizes of DIN 80701 Wing Nut / Toggle Nuts are available for immediate shipping from stock: Diameters ranging from M16 to M24 in stainless steel A4.

DIN (Deutsches Institut für Normung - German Institute for Standardization) standards are issued for a variety of components including industrial fasteners as Metric DIN 7995 Phillips oval head wood screws. The DIN standards remain common in Germany, Europe and globally even though the transition to ISO standards is taking place. DIN standards continue to be used for parts which do not have ISO equivalents or for which there is no need for standardization.