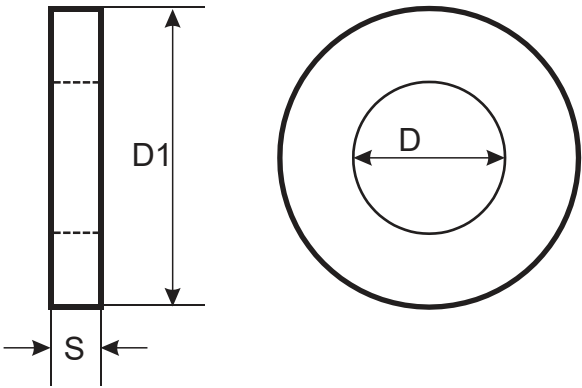




Product Dimensions and Weights

DIN 7349 Technical Specifications

Metric DIN 7349 Thick Flat Washers for Bolts with Heavy Type Spring Pins



D	D1	S	Weight kg/1000pcs	For clamping sleeves according to DIN 1481	For bolt diamater
3.2	9	1	0.436	6	M3
4.3	12	2	1.24	8	M4
5.3	15	2	2.43	10	M5
6.4	17	3	4.59	12	M6
8.4	21	4	9.15	16	M8
11	25	4	12.7	18	M10
13	30	6	27.1	21	M12
15	36	6	39.6	25	M14
17	40	6	48.5	28	M16
19	44	8	77.4	32	M18
21	44	8	73.4	35	M20
23	50	8	97.1	38	M22
25	50	10	116	40	M24
28	60	10	174	45	M27
31	68	10	226	50	M30



UNIQUE FASTENERS

Precision Fasteners, Built to Last
175/6 Sar Building, Sp Road, Bangalore, 560002



+91-8660813791



uniquefasteners.in



INFO@UNIQUEFASTENERS.IN



Metric DIN 7349 thick flat washers for bolts with heavy type spring pins are circular flat washers with a central hole that are thicker and have a larger outer diameter (OD) than the most commonly used metric flat washer (DIN 125). Consequently, the DIN 7349 thick flat washers have a larger surface area and are used where larger bearing surfaces are required.

Unique Fasteners offers over 500,000 unique fastener products from stock in inch and metric standard in a variety of materials and finishes. The following sizes of DIN 7349 thick flat washers are available for immediate shipping from stock: Diameters ranging from M3 to M30 in regular zinc plated steel and stainless steel A2 and stainless steel A4.

DIN (Deutsches Institut für Normung - German Institute for Standardization) standards are issued for a variety of components including industrial fasteners as Metric DIN 7349 thick flat washers for bolts with heavy type spring pins. The DIN standards are commonly used in Germany, Europe and globally even though the transition to ISO standards is gradually taking place. DIN standards continue to be used for parts which do not have ISO equivalents or for which there is no need for standardization as DIN 7349 thick flat washers.