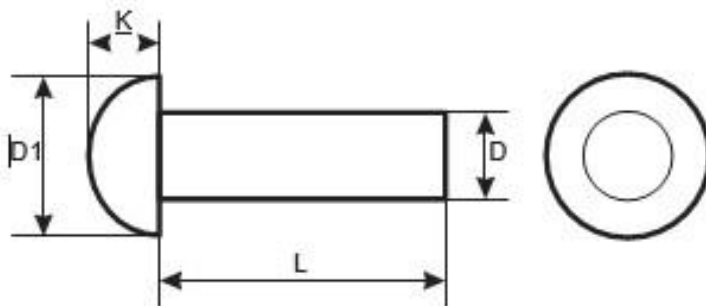




Product Dimensions, Standards and Weights

DIN 660 / ISO 1051B Technical Specifications

## Metric DIN 660 Round Head Solid Rivets



Dimensions of Metric DIN 660

D	3	4	5	6	8
D1	5.2	7	8.8	10.5	14
K	1.8	2.4	3	3.6	4.8
L (mm)	Weight in kg(s) per 1000 pcs				
6	0.620	1.05	1.81	2.86	
8	0.640	1.25	2.13	3.31	6.69
10	0.753	1.45	2.45	3.76	7.51
12	0.850	1.68	2.77	4.21	8.32
16	1.11	2.06	3.41	5.11	10.0
20	1.33	2.46	4.06	6.01	11.7
25	1.63	2.68	4.82	7.16	13.4
30	1.90	3.49	5.62	8.31	15.8
35		4.00	6.42	9.45	17.7
40		4.50	7.10	10.6	19.7
45		5.00	7.78	11.75	21.2
50		5.50	8.46	12.90	28.8



# UNIQUE FASTENERS

Precision Fasteners, Built to Last  
175/6 Sar Building, Sp Road, Bangalore, 560002



+91-8660813791



[uniquefasteners.in](http://uniquefasteners.in)



[INFO@UNIQUEFASTENERS.IN](mailto:INFO@UNIQUEFASTENERS.IN)



Metric DIN 660 round head solid rivets have a rounded head at one end and a smooth cylindrical pin at the other. They are to be inserted through pre-drilled aligned holes in the pieces to be joined. The plain end protruding through the surface is then deformed creating a second head and tightly securing the two pieces together. Diameters ranging from M2 to M6 and lengths up to 40mm are available.

DIN (**D**eutsches **I**nstitut für **N**ormung - German Institute for Standardization) standards are issued for a variety of components including industrial fasteners as Metric DIN 660 round head solid rivets. The DIN standards remain common in Germany, Europe and globally even though the transition to ISO standards is taking place. DIN standards continue to be used for parts which do not have ISO equivalents or for which there is no need for standardization. The ISO equivalent for DIN 660 round head solid rivets is ISO 1051B.