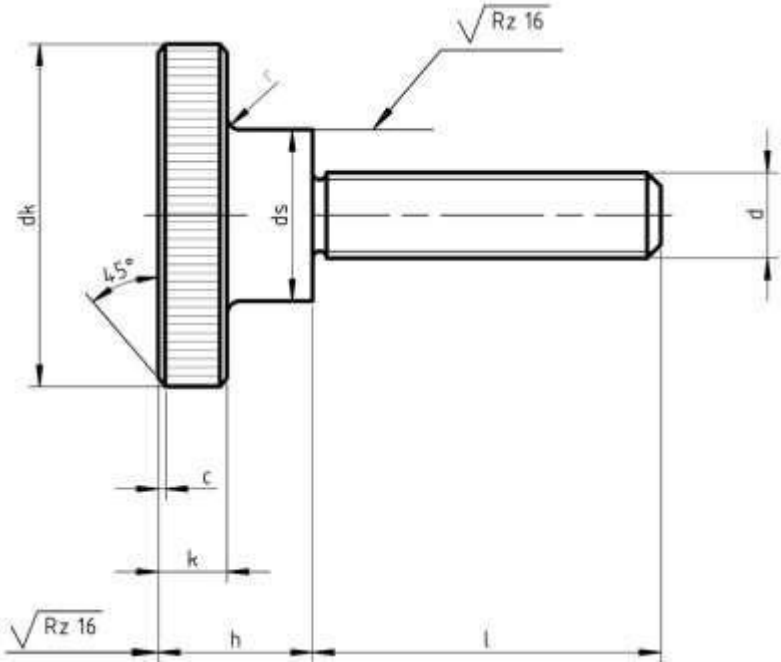




Product Dimensions and Weights

DIN 464 Specifications

Metric DIN 464 Knurled Thumb Screws, High Type



Dimensions of Metric DIN 464 Knurled Thumb Screws, High Type

Thread d		M1	M1.2	M1.4	M1.6	M2	M2.5	M3	(M3.5)	M4	M5	M6	M8	M10
P		0.3	0.25	0.3	0.35	0.4	0.45	0.5	0.6	0.7	0.8	1	1.25	1.5
b		3	3.5	4	5	6	8	9	10	12	15	18	24	30
c		Edges chamfered				0.3	0.3	0.4	0.4	0.4	0.5	0.6	0.6	
dk	Nominal	5.5	6	7	7.5	9	11	12	14	16	20	24	30	36
	max.	5.7	6.24	7.29	7.79	9.3	11.4	12.4	14.35	16.4	20.4	24.4	30.4	36.5
	min.	5.3	5.76	6.71	7.21	8.7	10.7	11.7	13.65	15.7	19.6	23.6	29.6	35.5



# UNIQUE FASTENERS

Precision Fasteners, Built to Last

175/6 Sar Building, Sp Road, Bangalore, 560002



+91-8660813791



[uniquefasteners.in](http://uniquefasteners.in)



[INFO@UNIQUEFASTENERS.IN](mailto:INFO@UNIQUEFASTENERS.IN)



Thread d		M1	M1.2	M1.4	M1.6	M2	M2.5	M3	(M3.5)	M4	M5	M6	M8	M10
ds	Nominal = max.	2.8	3	3.5	3.8	4.5	5	6	7	8	10	12	16	20
	min.	2.6	2.75	3.2	3.5	4.2	4.7	5.7	6.64	7.64	9.64	11.6	15.6	19.5
h	Nominal	3.5	4	4.7	5	5.3	6.5	7.5	8.5	9.5	11.5	15	18	23
	max.	3.7	4.24	4.94	5.24	5.5	6.79	7.79	8.79	9.79	11.9	15.4	18.4	23.4
	min.	3.3	3.76	4.46	4.76	5.1	6.21	7.21	8.21	9.21	11.2	14.7	17.7	22.6
k	Nominal = max.	1.5	1.5	2	2	2	2.5	2.5	3	3.5	4	5	6	8
	min.	1.3	1.25	1.75	1.75	1.8	2.25	2.25	2.75	3.2	3.7	4.7	5.7	7.64
n	Nominal	0.3	0.4	0.4	0.4	0.5	0.6	0.8	0.8	1	1.2	1.6	2	2.5
	min.	0.4	0.46	0.46	0.46	0.6	0.66	0.86	0.86	1.06	1.26	1.66	2.06	2.56
	max.	0.5	0.6	0.6	0.6	0.7	0.8	1	1	1.2	1.51	1.91	2.31	2.81
r		0.5	0.5	0.5	0.5	0.5	0.5	0.5	0.5	0.5	1	1	2	2
t	min.	0.7	0.8	0.9	1	1.1	1.5	1.8	2	2.2	2.8	3.5	4.5	6
	max.	0.9	1	1.15	1.3	1.4	1.8	2.2	2.5					

All measurements are in mm

Metric DIN 464 are raised knurled head thumb screws which have a wide shallow cylindrical head with ridged (knurled) sides with an unthreaded shoulder immediately below the bearing surface. Metric thumb screws are designed for quick and convenient tightening and loosening by hand without the need of any tool or driver. The large head with the knurled grip allows the screw to be tightened or loosened with minimal external force. This feature makes the screw an ideal fastener for any device that require frequent assembly/disassembly. They are commonly used to fasten safety covers of electronic devices. They are typically inserted and tightened into pre-drilled tapped hole. Metric DIN 464 raised knurled head thumb screws are available in styles: full thread (type A), part thread (type B) and a slotted head (type Sz). These screws are available in steel as well as stainless steel A2 and A4. Unique Fasteners offers over 500.000 unique fastener products from stock in inch and metric standard in a variety of materials and finishes. The following sizes of metric DIN 464 raised knurled head thumb screws are available for immediate shipping from stock: Diameters ranging from M3 to M10 up to 35mm long in steel and stainless steel A2 and A4.

DIN (Deutsches Institut für Normung - German Institute for Standardization) standards are issued for a variety of components including industrial fasteners as metric DIN 464 raised knurled head thumb screws. The DIN standards remain common in Germany. Europe and globally even though the transition to ISO standards is taking place. DIN standards continue to be used for parts which do not have ISO equivalents or for which there is no need for standardization like DIN 464 raised knurled head thumb screws.