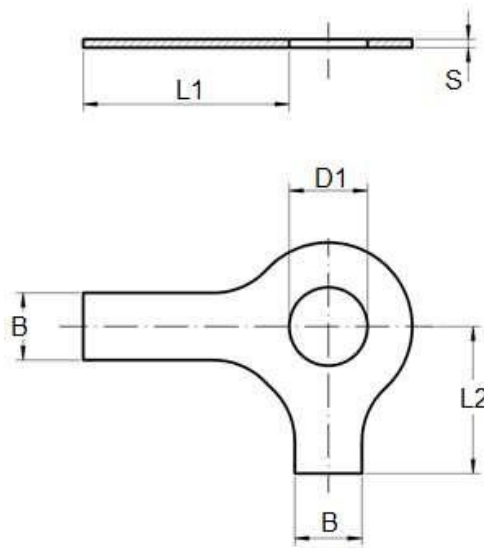




Product Dimensions, Standards and Weights

DIN 463 Technical Specifications

Metric DIN 463 Two Tab (long and short) Washers



Dimensions of Metric DIN 463 Two Tab Washers

size	d1	b	l1	l2	s
M4	4.3	5	14	6.5	0.38
M5	5.3	6	16	8	0.5
M6	6.4	7	18	9	0.5
M8	8.4	8	20	11	0.75
M10	10.5	10	22	13	0.75
M12	13	12	28	15	1
M14	15	12	28	16	1
M16	17	15	32	18	1



size	d1	b	l1	l2	s
M18	19	18	36	20	1
M20	21	18	36	21	1
M22	23	20	42	23	1
M24	25	20	42	25	1
M27	28	23	48	29	1.6
M30	31	26	52	32	1.6
M33	34	28	56	34	1.6
M36	37	30	60	38	1.6
M39	40	32	64	41	1.6

Metric DIN 463 Two Tab Washers have a configuration where both tabs are perpendicular to each other with one long tab and one shorter tab. They are designed to prevent the washer from rotating in relation to the nut, bolt or shaft. The tabs are designed to be bent over mating parts – usually a nut or bolt to create a physical barrier to rotation. Unique Fasteners offers one of the most complete ranges of metric tab washers and other inch and metric industrial fasteners for immediate delivery from stock. The following sizes of metric DIN 463 Two Tab (long and short) Washers are available for immediate shipping from stock: Diameters ranging from M5 to M40 in A2 and marine grade A4 stainless steel.

DIN (**D**eutsches **I**nstitut für **N**ormung - German Institute for Standardization) standards are issued for a variety of components including industrial fasteners as Metric DIN 463 Two Tab (long and short) Washers. The DIN standards remain common in Germany, Europe and globally even though the transition to ISO standards is taking place. DIN standards continue to be used for parts which do not have ISO equivalents or for which there is no need for standardization.