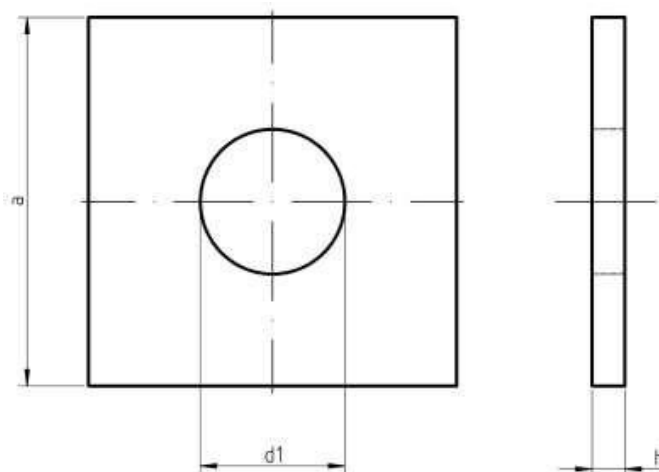




Product Dimensions, Standards and Weights

DIN 436 Technical Specifications

Metric DIN 436 Flat Square Washers



Dimensions of Metric DIN 436 Flat Square Washers

Nominal size	thread size	d1		a		h			weight kg/1000pcs
		min.	max.	max.	min.	Nominal	max.	min.	
11	M10	11	11.4	30	28.7	3	3.6	2.4	20
13.5	M12	13.5	13.9	40	38.4	4	4.6	3.4	45.7
17.5	M16	17.5	18.2	50	48.4	5	6	4	88.7
22	M20	22	22.8	60	58.1	5	6	4	126
24	M22	24	24.8	70	68.1	6	7	5	209
26	M24	26	26.8	80	78.1	6	7	5	275
30	M27	30	30.8	90	87.8	6	7	5	348
33	M30	33	34	95	92.8	6	7	5	385
36	M33	36	37	100	97.8	6	7	5	423
39	M36	39	40	110	108	8	9.2	6.8	685
42	M39	42	43	125	123	8	9.2	6.8	895
45	M42	45	46	135	133	8	9.2	6.8	1050
48	M45	48	49	140	138	8	9.2	6.8	1120
52	M48	52	53.2	150	148	10	11.2	8.8	1600
56	M52	56	57.2	160	158	10	11.2	8.8	1820



UNIQUE FASTENERS

Precision Fasteners, Built to Last

175/6 Sar Building, Sp Road, Bangalore, 560002



+91-8660813791



uniquefasteners.in



INFO@UNIQUEFASTENERS.IN



Metric DIN 436 Flat Square Washers, also known as square plate washers are square in shape with a round hole. They are often used instead of round washer for timber/wood construction and concrete floor applications as they provide for larger load distribution. Unique Fasteners offers one of the most complete ranges of metric washers and other inch and metric industrial fasteners for immediate delivery from stock. The following sizes of metric DIN 436 Flat Square Washers are available for immediate shipping from stock: Diameters ranging from M10 to M24 in A2 and marine grade A4 stainless steel.

DIN (**D**eutsches **I**nstitut für **N**ormung - German Institute for Standardization) standards are issued for a variety of components including industrial fasteners as Metric DIN 436 Flat Square Washers. The DIN standards remain common in Germany, Europe and globally even though the transition to ISO standards is taking place. DIN standards continue to be used for parts which do not have ISO equivalents or for which there is no need for standardization.