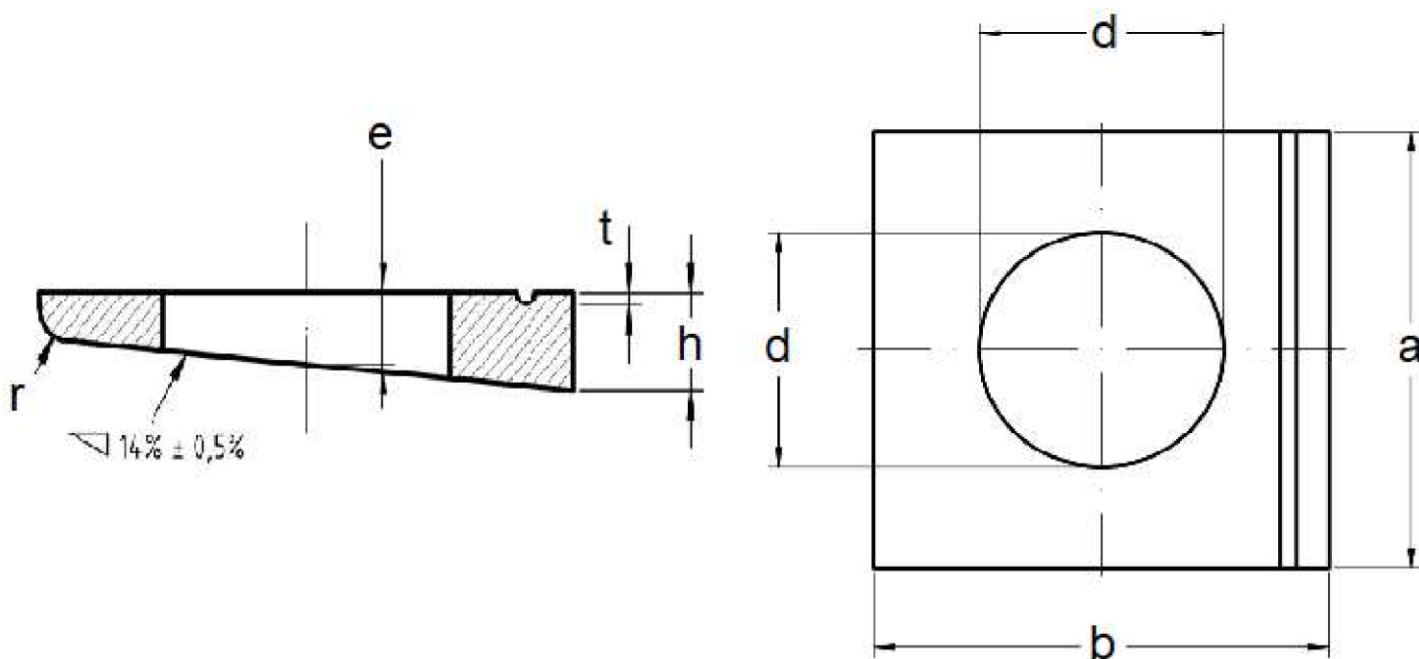




Product Dimensions, Standards and Weights

DIN 435 Technical Specifications

Metric DIN 435 Square Taper Washers



Dimensions of Metric DIN 435 Square Taper Washers

Nominal size (d)	thread size	a	b	e	h			r	t	Weight kg/1000pcs
				auxiliary dimension	Nominal size	min.	max.	approx.	approx.	
9	M8	22	22	3.05	4.6	3.6	5.6	1.2	0.5	10.2
11.5	M10	22	22	3.05	4.6	3.6	5.6	1.2	0.5	9.4
13.5	M12	26	30	4.1	6.2	5	7.4	1.6	0.7	20.1
17	M16	32	36	5	7.5	6.3	8.7	2	0.8	35.6
22	M20	36	40	6.1	9.2	8	10.4	2.4	0.9	67
24	M22	40	44	6.5	10	8.8	11.2	2.4	1	90
26	M24	56	56	6.9	10.8	9.3	12.3	2.4	1	143
28	M27			6.9	10.8	9.3	12.3	2.4	1	133



UNIQUE FASTENERS

Precision Fasteners, Built to Last
175/6 Sar Building, Sp Road, Bangalore, 560002



+91-8660813791



uniquefasteners.in



INFO@UNIQUEFASTENERS.IN



Metric DIN 435 Square Taper Washers are wedge shaped square washers with an 8% taper. They have a single groove running the full length of the washer at the thick end perpendicular to the taper and is used primarily for I channel sections. Unique Fasteners offers one of the most complete ranges of metric washers and other inch and metric industrial fasteners for immediate delivery from stock. The following sizes of metric DIN 435 Square Taper Washers are available for immediate shipping from stock: Diameters ranging from M8 to M24 in A2 and marine grade A4 stainless steel.

DIN (**D**eutsches **I**nstitut für **N**ormung - German Institute for Standardization) standards are issued for a variety of components including industrial fasteners as Metric DIN 435 Square Taper Washers. The DIN standards remain common in Germany, Europe and globally even though the transition to ISO standards is taking place. DIN standards continue to be used for parts which do not have ISO equivalents or for which there is no need for standardization.