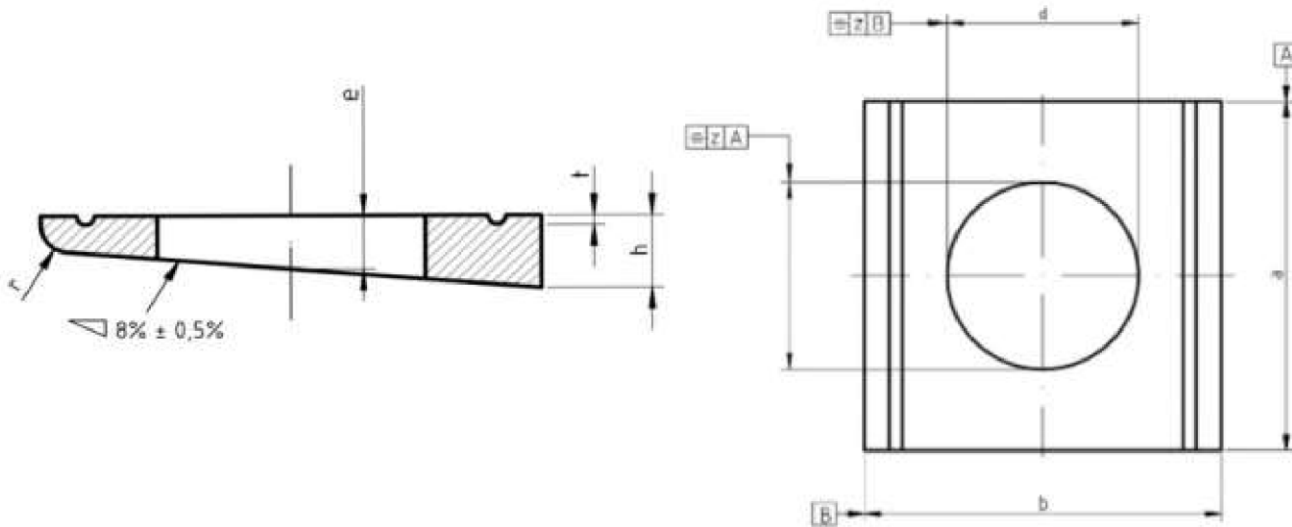


## Metric DIN 434 Square Taper Washers



Dimensions of Metric DIN 434 Square Taper Washers

Nominal size	thread	d min.	d max.	a nominal size	a min.	a max.	b nominal size	b min.	b max.	e	h nominal size	h min.	h max.	r approx.	t approx.	z	weight kg/1000pcs
9	M8	9	9.36	22	20	24	22	21.4	22.7	2.9	3.8	3.2	4.4	1.6	0.5	1.68	9.57
11	M10	11	11.43	22	20	24	22	21.4	22.7	2.9	3.8	3.2	4.4	1.6	0.5	1.68	8.85
13.5	M12	13.5	13.93	26	24	28	30	29.4	30.7	3.7	4.9	3.9	5.9	2	0.7	1.68	18.2
17.5	M16	17.5	17.93	32	29.5	34.5	36	35.2	36.8	4.45	5.9	4.9	6.9	2.4	0.8	2	31.4
22	M20	22	22.52	40	37.5	42.5	44	43.2	44.8	5.25	7	6	8	2.8	0.9	2	56.9
24	M22	24	24.52	44	41.5	46.5	50	49.2	50.8	6	8	7	9	3.2	1	2	82.3
26	M24	26	26.52	56	53	59	56	55.1	57	6.26	8.5	7.3	9.7	3.2	1	3.8	128
30	M27	30	30.52	56	53	59	56	55.1	57	6.26	8.5	7.3	9.7	3.2	1	3.8	119

Metric DIN 434 Square Taper Washers are wedge shaped square washers with an 8% taper. They have two grooves running the full length of the washer perpendicular to the taper and is used primarily for U channel sections. Unique Fasteners offers one of the most complete ranges of metric washers and other inch and metric industrial fasteners for immediate delivery from stock. The following sizes of metric DIN 434 Square Taper Washers are available for immediate shipping from stock: Diameters ranging from M9 to M24 in A2 and marine grade A4 stainless steel.



DIN (**D**eutsches **I**nstitut für **N**ormung - German Institute for Standardization) standards are issued for a variety of components including industrial fasteners as Metric DIN 434 Square Taper Washers. The DIN standards remain common in Germany, Europe and globally even though the transition to ISO standards is taking place. DIN standards continue to be used for parts which do not have ISO equivalents or for which there is no need for standardization.