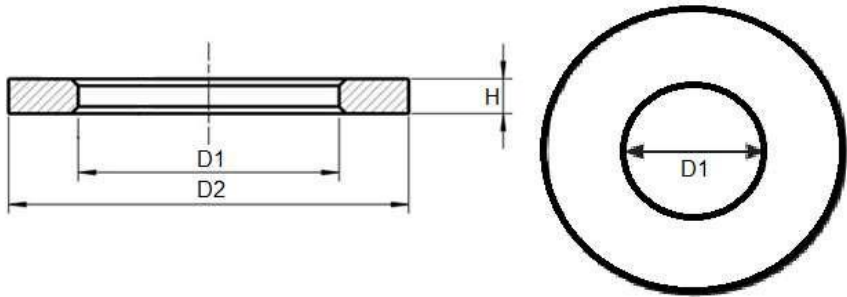




Product Dimensions, Standards and Weights

DIN 433 / ISO 7092 Technical Specifications

Metric DIN 433 Flat Washers



Dimensions of Metric DIN 433 Flat Washers

| For Thread | Nominal size | D1 | | D2 | | H Nominal size | H | | weight kg/1000pcs |
|------------|--------------|------|-------|------|-------|-------------------|------|------|----------------------|
| | | min. | max. | min. | max. | | min. | max. | |
| M1 | 1.1 | 1.1 | 1.24 | 2.5 | 2.25 | 0.3 | 0.35 | 0.25 | 0.01 |
| M1.2 | 1.3 | 1.3 | 1.44 | 3 | 2.75 | 0.3 | 0.35 | 0.25 | 0.012 |
| M1.4 | 1.5 | 1.5 | 1.64 | 3 | 2.75 | 0.3 | 0.35 | 0.25 | 0.013 |
| M1.6 | 1.7 | 1.7 | 1.84 | 3.5 | 3.2 | 0.3 | 0.35 | 0.25 | 0.017 |
| M1.8 | 2 | 2 | 2.14 | 4 | 3.7 | 0.3 | 0.35 | 0.25 | 0.022 |
| M2 | 2.2 | 2.2 | 2.34 | 4.5 | 4.2 | 0.3 | 0.35 | 0.25 | 0.029 |
| M2.5 | 2.7 | 2.7 | 2.64 | 5 | 4.7 | 0.5 | 0.55 | 0.45 | 0.065 |
| M3 | 3.2 | 3.2 | 3.38 | 6 | 5.7 | 0.5 | 0.55 | 0.45 | 0.079 |
| M3.5 | 3.7 | 3.7 | 3.88 | 7 | 6.64 | 0.5 | 0.55 | 0.45 | 0.109 |
| M4 | 4.3 | 4.3 | 4.48 | 8 | 7.64 | 0.5 | 0.55 | 0.45 | 0.14 |
| M5 | 5.3 | 5.3 | 5.48 | 9 | 8.64 | 1 | 1.1 | 0.9 | 0.32 |
| M6 | 6.4 | 6.4 | 6.62 | 11 | 10.57 | 1.6 | 1.8 | 1.4 | 0.79 |
| M8 | 8.4 | 8.4 | 8.62 | 15 | 14.57 | 1.6 | 1.8 | 1.4 | 1.52 |
| M10 | 10.5 | 10.5 | 10.77 | 18 | 17.57 | 1.6 | 1.8 | 1.4 | 2.11 |
| M12 | 13 | 13 | 13.27 | 20 | 19.48 | 2 | 2.2 | 1.8 | 2.65 |
| M14 | 15 | 15 | 15.27 | 24 | 23.48 | 2.5 | 2.7 | 2.3 | 5.41 |
| M16 | 17 | 17 | 17.27 | 28 | 27.48 | 2.5 | 2.7 | 2.3 | 7.63 |
| M18 | 19 | 19 | 19.33 | 30 | 29.48 | 2.5 | 2.7 | 2.3 | 8.31 |
| M20 | 21 | 21 | 21.33 | 34 | 33.38 | 3 | 3.3 | 2.7 | 13.2 |
| M24 | 25 | 25 | 25.33 | 39 | 39.38 | 4 | 4.3 | 3.7 | 22.1 |
| M30 | 31 | 31 | 31.39 | 50 | 49.38 | 4 | 4.3 | 3.7 | 38 |
| M36 | 37 | 37 | 37.62 | 58 | 56.8 | 5 | 5.6 | 4.4 | 61.5 |



UNIQUE FASTENERS

Precision Fasteners, Built to Last
175/6 Sar Building, Sp Road, Bangalore, 560002



+91-8660813791



uniquefasteners.in



INFO@UNIQUEFASTENERS.IN



Metric DIN 433 Flat Washers are designed cheese head screws have a small OD slightly smaller than standard flat washers. They have a single tab that can be bent after up against the side of the nut to prevent loosening. .Unique Fasteners offers one of the most complete ranges of metric flat washers and other inch and metric industrial fasteners for immediate delivery from stock.

The following sizes of metric DIN 433 Flat Washers are available for immediate shipping from stock: Diameters ranging from M1.5 to M20 in A2 and marine grade A4 stainless steel.

DIN (**D**eutsches **I**nstitut für **N**ormung - German Institute for Standardization) standards are issued for a variety of components including industrial fasteners as Metric DIN 433 Flat Washers. The DIN standards remain common in Germany, Europe and globally even though the transition to ISO standards is taking place. DIN standards continue to be used for parts which do not have ISO equivalents or for which there is no need for standardization. In this case the ISO equivalent is ISO 7092.