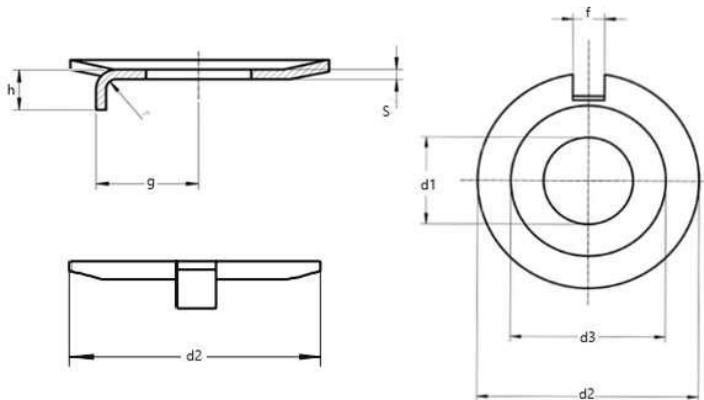




Product Dimensions, Standards and Weights

DIN 432 Technical Specifications

Metric DIN 432 External Tab Washers



Dimensions of Metric DIN 432 External Tab Washers

screw dia	d1	d2	d3	S	f	g	h
M3	3.2	12	8	0.4	2.5	4.5	2
M4	4.3	14	10	0.4	2.5	5.5	2
M5	5.3	17	12	0.75	3.5	7	2.5
M6	6.4	19	14	0.75	3.5	7.5	3
M8	8.4	22	16	1	3.5	8.5	4
M10	10.5	26	20	1	4.5	10	4
M12	13	30	24	1.2	4.5	12	4.5
M14	15	33	27	1.2	4.5	13	4.5
M16	17	36	30	1.2	5.5	15	4.5
M20	21	42	36	1.6	6.5	18	4.5
M24	25	50	43	1.6	7.5	21	6.5
M30	31	63	55	1.6	8.5	25	9.5
M36	37	75	67	2	11	31	9.5



UNIQUE FASTENERS

Precision Fasteners, Built to Last

175/6 Sar Building, Sp Road, Bangalore, 560002



+91-8660813791



uniquefasteners.in



INFO@UNIQUEFASTENERS.IN



Metric DIN 432 External Tab Washers are designed to prevent the washer and the nut from rotating in an assembly. They have a single tab that can be bent after up against the side of the nut to prevent loosening. Unique Fasteners offers one of the most complete ranges of metric tab washers and other inch and metric industrial fasteners for immediate delivery from stock. The following sizes of metric DIN 432 External Tab Washers are available for immediate shipping from stock: Diameters ranging from M5 to M40 in A2 and marine grade A4 stainless steel.

DIN (**D**eutsches **I**nstitut für **N**ormung - German Institute for Standardization) standards are issued for a variety of components including industrial fasteners as Metric DIN 432 External Tab Washers. The DIN standards remain common in Germany, Europe and globally even though the transition to ISO standards is taking place. DIN standards continue to be used for parts which do not have ISO equivalents or for which there is no need for standardization.