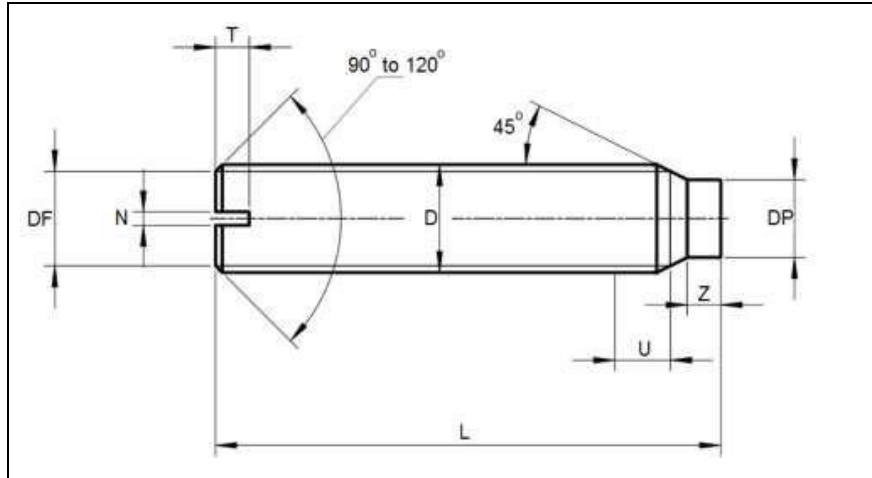




Product Dimensions and Weights

DIN 417 / ISO 4735 Technical Specifications

Metric DIN 417 Slotted Set Screws with Long Dog Point



Dimensions of DIN 417 Slotted Set Screws with Long Dog Point

	D	M 1.6	M 2	M 2.5	M 3	(M3.5)	M 4	M 5	M 6	M 8	M 10	M 12
P		0.35	0.4	0.45	0.5	0.6	0.7	0.8	1	1.25	1.5	1.75
DF				Thread - core diameter								
DP	max.	0.8	1	1.5	2	2.2	2.5	3.5	4	5.5	7	8.5
	min.	0.55	0.75	1.25	1.75	1.95	2.25	3.2	3.7	5.2	6.64	8.14
N	Nominal size	0.25	0.25	0.4	0.4	0.5	0.6	0.8	1	1.2	1.6	2
	min.	0.31	0.31	0.46	0.46	0.56	0.66	0.86	1.06	0.26	1.66	2.06
	max.	0.45	0.45	0.6	0.6	0.7	0.8	1	1.2	1.51	1.91	2.31
T	min.	0.56	0.64	0.72	0.8	0.96	1.12	1.28	1.6	2	2.4	2.8
	max.	0.74	0.84	0.95	10.5	1.21	1.42	1.63	2	2.5	3	3.6
Z	min.	0.8	1	1.25	1.5	1.75	2	2.5	3	4	5	6
	max.	1.05	1.25	1.5	1.75	2	2.25	2.75	3.25	4.3	5.3	6.3

All measurements are in mm



UNIQUE FASTENERS

Precision Fasteners, Built to Last
175/6 Sar Building, Sp Road, Bangalore, 560002



+91-8660813791



uniquefasteners.in



INFO@UNIQUEFASTENERS.IN



Metric DIN 417 Slotted Set Screws with Long Dog Point are typically used to secure one object within or against another. Since the set screw (aka grub screw) is headless and threaded along the entire length of the screw it can pass through a threaded hole of one object and tightened against another object. They are often used to prevent relative motion between two rotating parts such as the movement of a pulley or a gear on a shaft. The clamping force is generated through the bottom tip of the screw that projects through the outer object into or against the inner object. The dog point is a flat tip protruding from opposite end from the slotted drive and is usually positioned into a groove of a shaft allowing the shaft to rotate while keeping the part in place on the shaft. The slot drive allows for tightening and/or loosening with a single blade slotted screwdriver. Unique Fasteners offers the following sizes for immediate delivery from stock: Diameters ranging from M3 to M10 and lengths up to 35mm in Steel and stainless steel A2 and A4.

DIN (**D**eutsches **I**nstitut für **N**ormung - German Institute for Standardization) standards are issued for a variety of components including industrial fasteners as Metric DIN 417 Slotted Set Screws with Long Dog Point. The DIN standards remain common in Germany, Europe and globally even though the transition to ISO standards is taking place. DIN standards continue to be used for parts which do not have ISO equivalents or for which there is no need for standardization as Metric DIN 417 Slotted Set Screws with Long Dog Point.