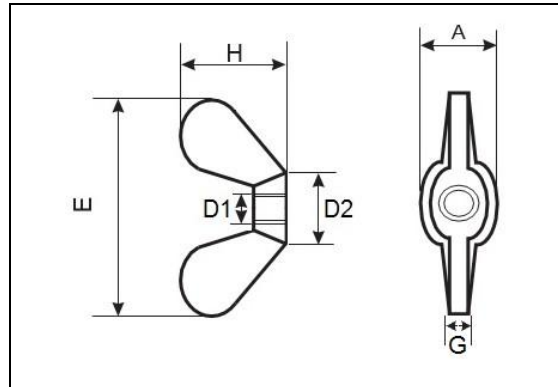




Product Dimensions and Weights

DIN 315 Technical Specifications

Metric DIN 315 Wing Nuts



Dimensions of DIN 315 Wing Nuts

D1	M4	M5	M6	M8	M10	M12	M14	M16	M20	M24
D2 max	8.0	11.0	13.0	16.0	20.0	23.0	28.0	29.0	35.0	44.0
E max	20.0	26.0	33.0	39.0	51.0	65.0	72.0	73.0	90.0	110.0
G max	1.9	2.3	2.3	2.8	4.4	4.9	6.0	6.4	6.9	9.4
H max	10.5	13.0	17.0	20.0	25.0	33.5	36.0	37.5	46.5	56.5
A	8	10	12	16	20	23	23	28	36	45
Weight kg/1000pcs	2	3.5	5.9	8.7	14.8	37.8	75	86	161	260

All measurements are in mm

Metric DIN 315 wing nuts / butterfly nuts of the German Type have two rounded wing like projections. This unique design makes it possible to use your thumb and forefinger to turn and tighten the nut rather than having to use a wrench or other tool thus ensuring easy rapid assembly and disassembly using only fingers. DIN 315 wing nuts can be used for many applications where quick hand tensioning and clamping is required. Unique Fasteners offers the following sizes for immediate delivery from stock: Diameters ranging from M4 to M24 in steel and stainless steel A2 and A4.

DIN (**D**eutsches **I**nstitut für **N**ormung - German Institute for Standardization) standards are issued for a variety of components including industrial fasteners as Metric DIN 315 wing nuts. The DIN standards remain common in Germany, Europe and globally even though the transition to ISO standards is taking place. DIN standards continue to be used for parts which do not have ISO equivalents or for which there is no need for standardization as in the case for DIN.