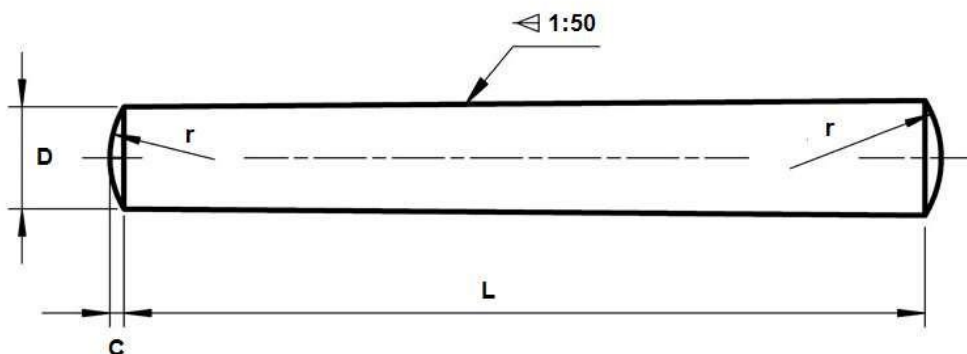




Product Dimensions and Weights Specifications

DIN 1 / ISO 2339

Metric DIN 1 Taper Pins



D	2	3	4	5	6	8	10	12	16	20
C max	0.30	0.45	0.60	0.75	0.90	1.20	1.50	1.80	2.50	3.00
r	2.00	3.00	4.00	5.00	6.00	8.00	10.00	12.00	16.00	20.00

All measurements are in mm

Metric DIN 1 taper pins solid steel rods that tapers through the length to a smaller diameter at one end. Standard inch sized taper pins have a taper on diameter of 1:48 while DIN 1 metric taper pins have a taper of 1:50. The length of a taper pin excludes the slightly convex ends. The diameter of a taper pin is measured at the large end for inch standard (imperial) and at the narrow end for metric DIN 1 taper pins. Taper pins are used to secure two objects together. Because of their wedge shape, taper pins are self-locking in that the further it is inserted, the tighter the connection. As they are seated a friction force develops along the whole length and diameter of the pin which locks the pin in place. UNIQUE Fasteners offers over 500,000 unique fastener products from stock in inch and metric standard in a variety of materials and finishes. The following sizes of DIN 1 taper pins are available for immediate shipping from stock: Diameters ranging from M1.5 to M20 up to 120mm long in steel and stainless steel A1 and marine grade 316 stainless steel.

DIN (Deutsches Institut für Normung - German Institute for Standardization) standards are issued for a variety of components including industrial fasteners as Metric DIN 1 taper pins. The DIN standards are commonly used in Germany, Europe and globally even though the transition to ISO standards is gradually taking place. DIN standards continue to be used for parts which do not have ISO equivalents. The ISO equivalent for DIN 1 taper pins is ISO 2339.