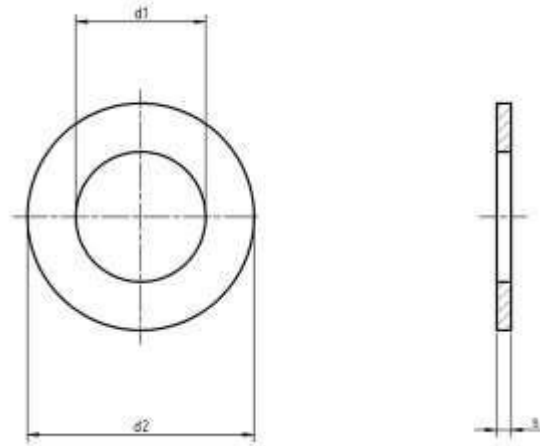




Product Dimensions, Standards and Weights

DIN 1440 / ISO 8738 Technical Specifications

Metric DIN 1440 Medium Flat Washer



Dimensions of Metric DIN 1440 Medium Flat Washer

d1 H11	For thread	d2	s	Weight kg/1000pcs
3	M3	6	0.8	0.13
4	M4	8	0.8	0.23
5	M5	10	0.8	0.36
6	M6	12	1.6	1.05
7	M7	14	1.6	1.42
8	M8	16	2	2.22
10	M10	20	2.5	4.56



UNIQUE FASTENERS

Precision Fasteners, Built to Last
175/6 Sar Building, Sp Road, Bangalore, 560002



+91-8660813791



uniquefasteners.in



INFO@UNIQUEFASTENERS.IN



d1 H11	For thread	d2	s	Weight kg/1000pcs
12	M12	25	3	8.99
13	M13	25	3	8.36
14	M14	28	3	10.8
16	M16	28	3	9.68
18	M18	30	4	13.8
20	M20	32	4	15
22	M22	34	4	16.2
23	M23	36	4	18.5
24	M24	38	4	21.4
25	M25	40	4	23.6
26	M26	40	5	28.5
27	M27	40	5	26.5
28	M28	42	5	29.7
30	M30	45	5	34.2
32	M32	50	5	44.8
33	M33	50	5	43.3
35	M35	52	6	52.8
36	M36	52	6	49.5
40	M40	58	6	63.7



UNIQUE FASTENERS

Precision Fasteners, Built to Last
175/6 Sar Building, Sp Road, Bangalore, 560002



+91-8660813791



uniquefasteners.in



INFO@UNIQUEFASTENERS.IN



d1 H11	For thread	d2	s	Weight kg/1000pcs
45	M45	62	7	76.8
50	M50	68	8	101
55	M55	75	9	141
60	M60	80	9	151
65	M65	90	9	211
70	M70	95	10	250
75	M75	100	10	265
80	M80	110	12	413
85	M85	110	12	371
90	M90	115	12	370
95	M95	120	12	387
100	M100	125	14	472

Metric DIN 1440 (ISO 8738) flat washers are known as shaft washers or washer for clevis pin. The DIN 1440 flat washers have slightly larger outside diameters and thicknesses than standard washers, specifically sized to be used on clevis pins with hair pins (bridge pins). Unique Fasteners offers one of the most complete ranges of metric washers and other inch and metric industrial fasteners for immediate delivery from stock. The following sizes of metric DIN 1440 medium flat washer are available for immediate shipping from stock: Diameters ranging from M3 to M40 in A2 and marine grade A4 stainless steel.

DIN (**D**eutsches Institut für **N**ormung - German Institute for Standardization) standards are issued for a variety of components including industrial fasteners as Metric DIN 1440 Medium Flat Washer. The DIN standards remain common in Germany, Europe and globally even though the transition to ISO standards is taking place. DIN standards continue to be used for parts which do not have ISO equivalents or for which there is no need for standardization. In this case the ISO equivalency is ISO 8738