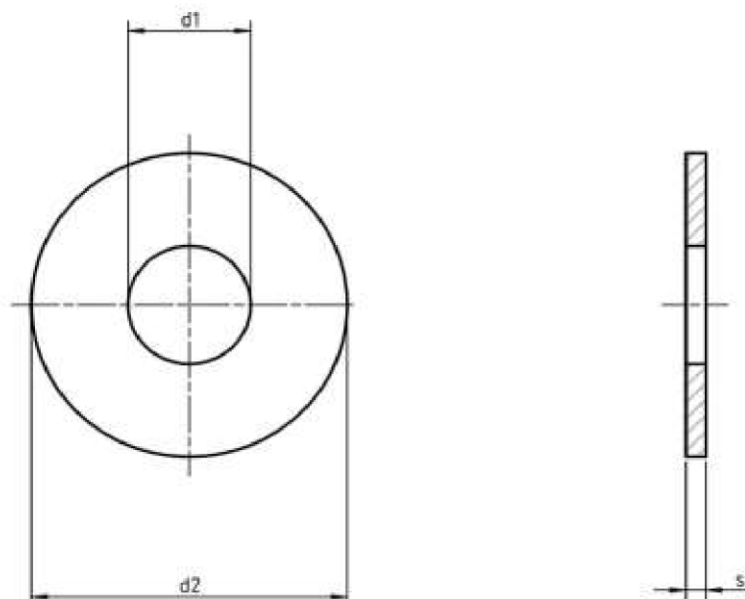




Product Dimensions, Standards and Weights

DIN 1052 Technical Specifications

Metric DIN 1052 Oversize Flat Washers



Dimensions of Metric DIN 1052 Oversize Flat Washers

d	d1	d2	s
M12	14	58	6
M16	18	68	6
M20	23	80	8
M22	25	92	8
M24	27	105	8



UNIQUE FASTENERS

Precision Fasteners, Built to Last
175/6 Sar Building, Sp Road, Bangalore, 560002



+91-8660813791



uniquefasteners.in



INFO@UNIQUEFASTENERS.IN



Metric DIN 1052 Oversize Flat Washers are oversized washers with larger outer diameters and are thicker than standard flat washers. These are typically used in wood construction and specifically with timber connectors. Unique Fasteners offers one of the most complete ranges of metric washers and other inch and metric industrial fasteners for immediate delivery from stock. The following sizes of DIN 1052 Oversize Flat Washers are available for immediate shipping from stock: Diameters ranging from M12 to M24 in A2 and A4 stainless steel.

DIN (**D**eutsches **I**nstitut für **N**ormung - German Institute for Standardization) standards are issued for a variety of components including industrial fasteners as Metric DIN 1052 Oversize Flat Washers. The DIN standards remain common in Germany, Europe and globally even though the transition to ISO standards is taking place. DIN standards continue to be used for parts which do not have ISO equivalents or for which there is no need for standardization.